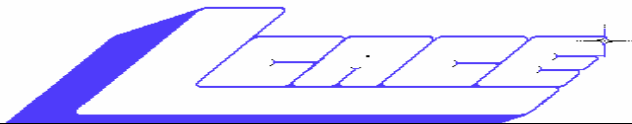




Genealogy

by Terri

INDEX	
Linksys EtherFast Cable/DSL Router.....	3
Flip Album 4.0.....	6



**Lake County Area Computer
Enthusiasts
Board of Directors**

2000-2001

LINDA BUSCH - President

lindashrub@juno.com

847.546.6728

MIKE McENERY - Vice President

News Journal Editor

mmcenery@core.com

847.872.1314

TERRI HANLON - Secretary

TerHanlon@aol.com

DWIGHT J.J. JOHNSON - Treasurer

jj1450xl@ix.netcom.com

847.623.3815

CORKY BELL - Program Coordinator - Webmaster

corky@foxvalley.net

815.344.1271

DONNA BELL - Membership Chairperson

donnabell1@juno.com

815.344.1271

LESTER LARKIN - Public Relations Chairperson

LesLarkin@NetZero.net

VOLUNTEERS

VIC FALKNER - Assistant-News Journal Editor

rvf@se-iowa.net

Lake County Area Computer Enthusiasts

L.C.A.C.E.

c/o Group Ambassador

409 S. Elmwood Ave.

Waukegan, Illinois 60085-5219

Membership

Membership for L.C.A.C.E. is open to all individuals and families interested in personal computing. Annual dues are \$20.00 per individual/family. Associate membership is only \$10.00 (out of state, unable to attend meetings). Membership includes a one year subscription to the L.C.A.C.E. News Journal and access to all club libraries and functions. Applications for membership may be obtained at the monthly meeting, by request on the club Hotline and are now available on our WEB site at <http://inf-net.com/lcace>.

Meetings

L.C.A.C.E. meetings are held on the second Saturday of each month at the Grant Township Meeting Hall, 411 S. Washington Ave., Ingleside, (Fox Lake) Illinois. The meeting location opens at 11:30 a.m., and the formal meeting begins at noon. All meetings are open to the public. Bring a friend!

Advertising

Ad rates per issue: Full page - \$25, Half page - \$15, Quarter page - \$10, Business Card - \$5. Discounts are available on advance purchase of multiple issues. Please send camera-ready copy and payment to the club address by the 21st of the month preceding publication. For more information on ad pricing, please call our Hotline. Ads are **FREE** to all paid members.

Notice

L.C.A.C.E. **WILL NOT CONDONE** or knowingly participate in copyright infringement of any kind. The L.C.A.C.E. *News Journal* is published by and for L.C.A.C.E. members. Opinions expressed herein are those of the individual authors and do not necessarily reflect the opinion of L.C.A.C.E., the membership, the Board of Directors, and/or our advertisers.

ARTICLE DEADLINE

The deadline for all articles being submitted for the *News Journal* is the 20th of each month. Send your articles via e-mail to Mike McEnery (mmcenery@core.com), Vic Falkner at (rvf@se-iowa.net) or the Club's e-mail at (lcace@inf-net.com).

L.C.A.C.E. HOTLINE

Voice: 847.623.3815

E-Mail: LCACE@inf-net.com

Fax: 413.521.7052

Web Site: www.inf-net.com/lcace
<http://lcace.tripod.com>

The L.C.A.C.E. News Journal is published eleven times annually. Members are encouraged to submit contributions and will be acknowledged in this newsletter.

Permission is granted to reproduce any or all parts of this newsletter in other User Group publications, provided that credit is given to L.C.A.C.E. and the individual author(s).

The News Journal is produced using a **Dell Dimension 4100 Computer**, Mustek 1200 III EP scanner using **MS Publisher 2000** software. Graphics, Editing provided by *Pegasus Enterprises*. Photos taken w/**Olympus D-400 Zoom Photo PC** digital camera. Printing is done on an **Epson Stylus Color 880 Printer**.



Linksys EtherFast Cable/DSL Router (4 port version)
 Review by: Bob Carpenter
 Street Price: around \$90-\$100
 Web site: www.linksys.com

Normally, a small review means that the reviewer didn't like the product. In this case, it couldn't be further from the truth. In fact, there isn't that much to say because the product works as advertised and is so painless to set up.

The hardware setup involved plugging in the router (yes, it needs power), plugging in the network cable from the cable modem into the WAN port, and plugging in the network cable from your network card to one of the four ports on the router.

Once the router is hooked up, it's time to configure your router. Though, you'll see many screens, most of the information can be kept at the default. You configure your router through a web browser (Internet Explorer 5.x or Netscape 4.7x). Just type http://192.168.1.1. You'll type "admin" as the password (you can change it later) and you'll see the following screen (figure 1).

You'll need to fill in the host name if you're using @Home since that's where you fill in the computer name that they give you to get on their service. The rest of the first tab I left alone. If you're running DSL rather than using cable modem service, you'll probably have to select the PPPoE (PPP over Ethernet) option in order for it to work.

This router can act as a DHCP server. That allows me to, very easily, plug in different computers to the router and allow all of them to share my cable modem. I can set up what addresses (and how many) are given out by the DHCP server. This isn't an issue for me, but is important for people who already have a home network.

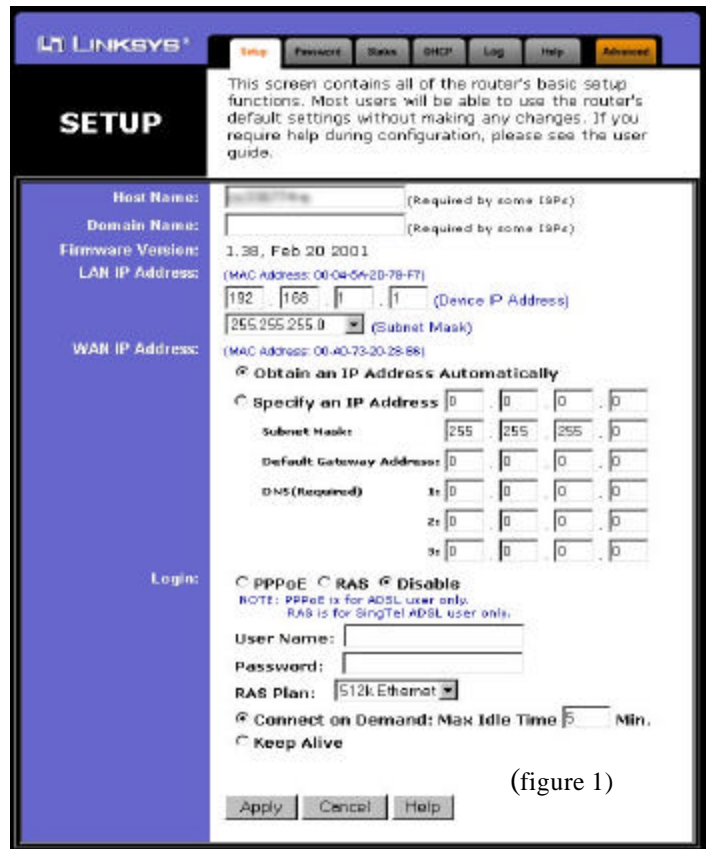
The most important thing for a lot of people is that the router also has a firewall built into it. I just left the router on its default settings and went to

www.grc.com to try out my firewall. Grc.com has, if you don't know already, the fine Shields Up! Web site. This site checks out your machine to make sure you don't have ports open that you shouldn't have open. My Linksys router passed this site with flying colors.

I don't really use the advanced features of the router where you can deny certain IP addresses access to the Internet or some of the other items that I don't really know about.

One other thing that I should mention is that I didn't have to do anything extra to get my streaming audio (Real Audio, streaming MP3s) or my Virtual Private Network connection going.

To wrap up, I've used the router for about 3 months and love it. I highly recommend this product if you're getting (or already have) a broadband connection. Also, if you want more information about the features that this router has, you can download the entire user guide (PDF format) from linksys.com.



(figure 1)



infiNET DIRECTIONS inc.

we have the means to take you there...

549 N. Rt. 83, Grayslake, IL 60030
847.543.1350

Complete Internet Service Includes:
Dial-up Service \$18.00/mo.
Home Pages Starting at \$50.00/mo.

- ?? 56k Dial-up Service
- ?? FTP Site Available
- ?? E-Mail Service
- ?? Home Page Design
- ?? Home Page Storage
- ?? Domain Name Registration
- ?? Windows & Networks setup & installation
- ?? Free Ads for selling your personal merchandise on the Web (visit) site: www.inf-net.com for more info.

CALL FOR INFO: 847.543.1350

All dial up service includes (1) E-Mail account. Additional E-Mail accounts as little as \$2.50/mo. For more details call us at (847) 543-1350 or send me an E-Mail at postmaster@inf-net.com. Applications for dial-up service available via E-Mail.

LCACE

Lake County Area Computer Enthusiasts

2001 Christmas Raffle

Grand Prize



Lexmark X83 All-In-One

Photo quality printing, 48 bit color scanning, PC free black and color copying, PC fax capability
2400 x 1200 dpi (black and color) on all paper types
Printing: Up to 12 pages per minute black and 6 pages per minute color
Scanning: 48 bit flat-bed scanner easily handles books, reports and more
Copying: PC free copies up to 10 copies per minute black and 3 copies per minute color

2nd Prize



Canon N650U 42-bit Color Scanner

600 x 1200dpi optical with selectable resolution up to 9600dpi
42 bit input colour depth
Powered and connected by USB for Windows 98/2000 or Mac OS 8.5+
Software for Windows & Mac including OmniPage Pro 9.0 for Windows
New Z-lid for scanning thick documents or books
Incorporating Canon's unique LIDE sensor technology
Front panel button and software for simple e-mail, fax and copy operation

3rd Prize

1-Year LCACE "Members Helping Members" Membership

Drawing: December 8, 2001
(Winner need not be present)

Tickets: \$1.00ea or 6/\$5.00

This Month's Software Review



Flip Album 4.0
Retails at \$49.95.
By Jim Rutledge

The use of FlipAlbum® 4.0 is for the manipulation of pictures, video and sound. It has a file menu interface with point and click graphics for those who adapt to that kind of editing. I have worked with a lot of various software such as Harvard Graphics, Quest and Power Point. This software has achieved an even playing field with each of these software programs. There is a place to mention the limited photo editing ability (sizing and rotating) within the program and slide show. I expect that this will be corrected in further versions.

I had use for this software in my job. I wanted to get close-up and personal with some of the computer equipment at work. Students that are in my class are not used to looking inside computers. I took many camera shots of the internal components of a computer. The students were impressed with the pectoral presentation of the lessons that I enhanced with FlipAlbum® 4.0.

Of course, you may have other ways of using this software. One may be to set up a family album, or perhaps organizing pictures to put on a CD for distribution for family reunions. FlipAlbum CDMaker is available for purchase at their website. Whatever circumstances you can think of where you could use pictures, video and audio, this software can do the project.

The installation was a snap. It had a fully compatible installation wizard to help install the program. I am beta tester for Windows XP. Currently I am running FlipAlbum® 4.0 on an evaluation copy of Windows XP Professional operating system. This is a good tie in with the new operating system and so far no hang-ups.

Perhaps one of the best features of this software is the ability to set up online albums for sharing with family. You keep an album up online and it is available for about two weeks. Users can download a free browser.

As far as response to questions via email, I got an automated response within 24 hrs. I had a customer system

response in 72 hours. Not bad.

FlipAlbum® is a pleasure to work with; even the novice can work this software like an expert.

System Requirements (Minimum)

- IBM PC Compatible Pentium 166 MHz
- Windows 95/98/ME/2000/NT 4.0
- 32 MB RAM
- 15 MB available hard-disk space
- 800x600 pixels screen resolution
- 16 bit color display adaptor

Flip Album 4.0
Retail price \$49.95
E-Book Systems, Inc.
1500 Wyatt Drive, Suite 15, Santa Clara, Ca. 95054
Tel: (408)919-6675
[Http://www.ebooksys.com/flipalbum/](http://www.ebooksys.com/flipalbum/)

L.C.A.C.E.
Christmas Party
December 8, 2001

University  of Illinois
Auditorium



L.C.A.C.E. Officers and News Journal
Staff would like to wish you all

Happy Thanksgiving



The following people have to submit membership renewals in November.

1. Terri Hanlon
2. Donna Kalinoski
3. Dr. Sheets
4. Phil Grimm

If you do not want your name published in the *News Journal* for any reason, please e-mail me and I will respect your wishes.

Note from the Editor

I will be going out of town at the end of November so I am asking anyone who wants to submit an article for the December *News Journal* to please have it to me by the Nov. 12th. Thank you in advance.

Mike

mmcenery@core.com

UPCOMING SHOW

November 4, 2001

9:30am - 4:00pm

Great prices!

Bargains galore!

Save up to 70% off retail on everything computer!

A VIRTUAL ONCE - A - MONTH CARNIVAL FOR COMPUTER USERS

Once a Month Thousands of Computer Users Gather at the Computer Country Expo to Shop with 80 Vendors from across the Midwest with "Everything Computer", Talk with Computer Clubs and Network with other Computer Users, Listen to Live Midi Enhanced Entertainment, Attend Workshops, Check out Demos, Have a chance to Win computer products in Hourly Raffles, Get help from A+ Technicians for computer upgrades and repairs, Pick up FREE Magazines! Come Join the Fun at the Computer Country Expo!!

We will have Certified A+ Technicians at the show who will help people as personal shoppers and take them around the show and make recommendations for what they are looking to purchase. Buyers can also have their products installed and/or tested by the technicians FREE of charge at the show.

**Holiday Inn
Main Ballroom
6161 W. Grand Avenue
Gurnee, Illinois 60031**

\$6 Admission

All L.C.A.C.E. Members who present their membership card will receive a \$1 discount.

See our WEB Site at

www.ccxpo.com

Print this page, fill out the form below, bring it with you to the show, and get \$1.00 off the entry fee!

Name: _____

Address: _____

City: _____ State: _____ Zipcode: _____

Telephone # _____ FAX # _____

E-Mail: _____ WEB Site: _____

October 7, 2001



The following is a listing of available LCACE members' E-Mail addresses:

Ruth Donahue-Allison
 Jim Ashworth
 Corky Bell
 Bobby Bell
 Donna Bell
 Bob Berry
 Kerry Broughton

William & Diane Brumbach
 Linda Busch
 Bob Carpenter
 Lisa Carter
 Rich & Pat Crocker
 Randell Durk
 Vic Falkner
 Tom Fitzsimmons
 Jack Frost
 Mr. & Mrs. G
 Phil Grimm
 Joe & Mary Griesemer
 Arnie Gudyka
 Marta Mata-Guzman
 Terri Hanlon
 Marshia Hobson

Tom Hudock, Jr.
 Dwight (J.J.) Johnson
 Donna Kalinoski
 Steve Kostelnik
 Lester Larkin
 John Lawless
 LeRoy & Bernice Long
 Mike McEnery
 John Nabors
 Larry Nixon
 Lee Nordstrom & Family
 Jeffrey J. Notter
 Anna Ross-Rodgers

Ken Rogers
 Marcia Rose
 Bruno Rusanowski
 James Rutledge
 Leslie Salsburg
 Paul Schintgen
 Walter Sheets
 Gerald Straw
 Bob Tuttle
 Bruce Welsch
 Steve Yeaton

rallison98@juno.com
 Blue_unicorn@netzero.com
 corky@foxvalley.net
 Bozo160@hotmail.com
 niteangel85@hotmail.com
 tberry64@aol.com
 kerrybroughton@hotmail.com
 bbrumbach@cs.com
 lindashrub@juno.com
 cubs14@bigfoot.com
 onedrwmn@juno.com
 RCPC75@aol.com
 randell@voyager.net
 rvf@se-iowa.net
 tomfitzsimmons@juno.com
 jfrost@megsinet.net
 MrG3165@aol.com
 pgrimm@surf.free.com
 moraine@netwurx.net
 arngood1@juno.com
 marta59@aol.com
 Terhanlon@aol.com
 marshigraphcs@netscap.net
 TEEPEE21@aol.com
 jj1450xl@ix.netcom.com
 donnaleek@juno.com
 steve_kostelnik@usa.net
 LesLarkin@NetZero.net
 jay@iwc.net
 Roylord@msn.com
 mmcenery@core.com
 jog@nomad.net
 nixonl@earthlink.net
 LeeNord@mw.sisna.com
 jnot@email.com
 Anna.Ross-Rodgers@ReliaStar.com
 drken@enteract.com
 Mrose74801@aol.com
 BRFJR@earthlink.net
 jrtnet1@home.com
 leslie164@juno.com
 paulj@theramp.net
 eddoc85@netzero.net
 pilotgks@concentric.net
 btuttle@ix.netcom.com
 brwelsch@hotmail.com
 hiflyer9@bigfoot.com

Members Web Sites

Corky Bell

<http://www.users.foxvalley.net/~corky>

Phil Grimm

<http://www.public.surf.free.com/pgrimm>

J.J.

<http://www.picturetrail/lcace>

Time to Renew

Renewals will be posted on our WEB site which is:

<http://www.inf-net.com/lcace>

If it is time for you to renew your membership, please fill out a new Application and a Member's Profile Sheet. These forms can be obtained at the meetings or downloaded from our WEB site.

See the CLUB PICTURES at:

www.picturetrail.com/lcace

Take a look, you just might see yourself.

As much as we try, we do make errors. Please advise us if there is a mistake in your E-Mail address or if it is not included in this listing. Send E-Mail to lcace@inf-net.com with the additions and/or corrections. Thank you.

This listing last updated - October 27, 2001

L.C.A.C.E Online

View our Sites

www.inf-net.com/lcace
<http://lcace.tripod.com>

E-Mail Us At:

lcace@inf-net.com

Club Photos

<http://www.picturetrail.com/lcace>

- ?? LCACE E-mail addresses
- ?? LCACE information
- ?? LCACE history and pictures
- ?? LCACE meeting, location and map
- ?? LCACE member's e-mail addresses
- ?? LCACE online membership application

This Months meeting

November 10, 2001

Grant Township Meeting Hall
411 S. Washington Avenue
Ingleside, (Fox Lake) Illinois

12pm - 2p.m.

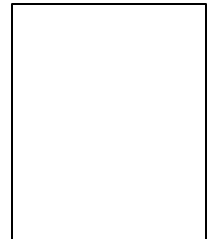
This month presentation:

Genealogy

Presented by
Terri Hanlon

L.C.A.C.E

Lake County Area Computer Enthusiasts
409 Elmwood Ave.
Waukegan, IL 60087-5219



ADDRESS CORRECTION REQUESTED