






Battling the Dark Side of The Net

“How To Battle the Dark Side of the Net and Win - Foiling Spam, Spy ware, Trojan Horses, Viruses and Hackers”

<p>LCACE Meeting Dates 2005</p> <p>19 Mar- FOIL BAD GUYS *</p> <p>09 Apr - INFINA DYNE DEMO (Club Elections 2005-2006)</p> <p>14 May- GENEALOGY</p>	<p>Inside this issue...</p> <p>Product Review (Graphics Card).....3</p> <p>Places 4 Aces.....4</p> <p>Tips and Tricks.....5</p> <p>E-Waste.....6</p> <p>Non-O/S Services.....7</p>
--	--

*Note: Date Change



“Members Helping Members”
(since 1983)

Board of Directors **2004-2005**

Linda Busch..... President
president@lcace.org

Mike McEnery.....Vice President
vicepresident@lcace.org

Jim Rutledge.....Secretary/News Journal Editor
secretary@lcace.org
editor@lcace.org
(847) 249-5244

Winnie Frost..... Treasurer
treasurer@lcace.org

Howard Shaughnessy.....Programs
programs@lcace.org

Dorothy Sutherland.....Membership
membership@lcace.org

Robin Seidenberg.....Public Relations
pr@lcace.org

The L.C.A.C.E. News Journal is published eleven times annually. Members are encouraged to submit contributions and will be acknowledged in this newsletter.

Permission is granted to reproduce any or all parts of this newsletter in other User Group publications, provided that credit is given to LCACE and the individual author(s).

The News Journal is produced using a Dell Dimension 2400, Dell Printer, and **MS Publisher 2003** software. Graphics editing and artwork provided by *Pegasus Enterprises*. Photos taken by **Various** digital cameras and Adobe Acrobat Pro 6.01 for PDF conversion.

Lake County Area Computer Enthusiasts
LCACE
c/o Group Ambassador
409 S. Elmwood Ave.
Waukegan, Illinois 60085-5219

Membership

Membership for LCACE is open to all individuals and families interested in personal computing. Annual dues are \$20.00 per individual/family. Associate membership is only \$10.00 (out of state, unable to attend meetings). Membership includes a one year subscription to the L.C.A.C.E. News Journal and access to all club libraries and functions. Applications for membership may be obtained at the monthly meeting, by request on the club Hotline, and are now available on our WEB site at - <http://www.lcace.org>.

Meetings

LCACE meetings are usually held on the second Saturday of each month at the Grayslake Area Public Library, 100 Library Lane, Grayslake, Illinois. The meeting room opens at noon and the formal meeting begins at 12:30 p.m. All meetings are open to the public. Bring a friend!

Advertising

Ad rates per issue: Full page - \$25, Half page - \$15, Quarter page - \$10, Business Card - \$5. Discounts are available on advance purchase of multiple issues. Please send camera-ready copy and payment to the club address by the 21st of the month preceding publication. For more information on ad pricing, please call our Hotline. Ads are FREE to all paid members.

Notice

LCACE WILL NOT CONDONE or knowingly participate in copyright infringement of any kind. The LCACE News Journal is published by and for LCACE members. Opinions expressed herein are those of the individual authors and do not necessarily reflect the opinion of LCACE, the membership, the Board of Directors, and/or our advertisers.

Product Review

BFG GeForce 5500 OC 256MB PCI CARD

J.Rutledge

What do you do when your graphics card can not handle picture presentation on your monitor? I went to buy a better graphic card. Here is the situation I faced. Yes, I still play computer games. I should be with CGA (Computer Gamer Anonymous). I played an older game, Pool of Radiance, that was a little shaky. The game came out in 1998 and when I got to the final showdown with a Dracolich, the game was dog slow.



I

scratched my head, and dismissed it as a programming error. By trade, I am a computer technician. I know the difference between hardware hang-ups and software glitches. Little did I know that my bias was in the way.

To go on, I purchased a newer game. It was Rome:Total War (I will refer to this game as RTW). It had all the bells and whistles I was looking for. I had noticed that the History Channel was using the same game engine as to present a couple of their shows.

These shows were famous battles around the time of the Roman Empire and featured a battle between Hannibal and the Romans fighting it out. I was astounded at how the pictures were animated and so real looking. I set off to find this game. I lucked out and found the game on sale at Best Buy for \$39.95, ten dollars off of the MSRP. I snatched it

up along with the companion guide that went with the game.

As you can tell, I was excited about getting it home and loading it up. More about that next month when I review the game. But, long story short, I loaded the program and started playing. Right off the bat the graphics were slow and the sound was skipping. I said to myself, "What the heck?"

These are my home computer stats:

Dell Dimension 2400
2.2 GHz CPU (Celeron)
1GB Ram
80GB Hard Drive
40x CDROM, 54x24x52 CDRW
3 PCI, no AGP slot or interface
On-board sound and graphics (Intel)

The integrated graphics were equal to 64MB AGP graphics. The sound was regular 16Bit. Are you are getting the picture of horriification? I thought I was really smart for buying this machine a year and a half ago for just \$375.00. Wrong! I bought the low-end Dell and bamboozled myself.

Well, first things first. I upgraded to a PNY NVIDIA FX5500 128MB PCI graphics card and 24Bit Sound Blaster card. This was nice, but not exactly great. The sound was all right, but the graphics still were a little sticky. What to do? What to do? I already spent \$125.00 dollars and no satisfaction. There was nothing wrong with the video card, just had no guts to it. I bit my lip and tried plan



I went to Fry's Electronics and purchased a PowerColor

(Continued on page 4)

(Continued from page 3)

9250 256MB PCI card and brought it home. I spent a week straight trying to configure this card and, at best, got it to work with minimal satisfaction. When I could get to the

game, the graphics were great. But, the Dell had no way of choosing between the on-board graphics card from the PCI card. Man, I was getting mad.

Finally, I bit my lip again and went to Best Buy to purchase a BFG GeForce Nvidia FX5500 256MB PCI OC card. The OC stands for over-clocked. It took all of seven minutes to configure and have it up and running. That's it. That PowerColor card is going on EBay. I can play the game seamlessly between desktop and game configuration. What a card!

What it all boils down to is compatibility of hardware. Something I should have recognized right away. I am really satisfied with this card. I could not get an AGP card due to no AGP slot. My PCI slots do not support PCI-E. I am at the low end still, but very satisfied.

A lesson for you if you need to meet your needs, you do not have to buy a new computer. I was getting close to that summation. But, I found what I needed. What is really nice is BFG Technologies, Inc. is right down the road in Lake Forrest They are close enough to get involved if I need them to. Plus, there is a Life-Time guarantee on the card. They encourage trade-ups in the future.

This card is a gamer's dream that is stuck in the twentieth century still. I do strive to stay up-to-date. I just had a hiccup this time. If you find yourself in the same position, look these people up. Read the specifications and make an informed decision.

CLUB NOTE

The Milwaukee club is doing a presentation on Msconfig and Regedit next month. This might be something our members would be interested in as a future presentation. We haven't done any upgrades or building a system in a while. System maintenance using the windows accessories or Norton's Utilities would also be another great presentation. There are so many down-to-earth subjects that could be covered at the meetings that are not above most of the members heads', including mine.

Places4Aces



web)Sites4Soaring ah

PLACES4ACES (web)sites4soaring ah's

Where I ferret out interesting, neat & great sites for **Elsie Acers**.
Howard Shaughnessy, site seeker

How well do you know your body? Well enough to assemble it correctly? The Science & Nature Human Body & Mind website at <http://bbc.co.uk> has games you can play: Organs, a 3D jigsaw puzzle, Muscles, Skeletons, (where you need to place them in their proper body places, Senses with a 20-question quiz, get wired with the Nervous system and a Puberty demo showing how our bodies changed during that time (most of us have forgotten this phase of our lives).

While you are there click on Yucky, Gross & Cool Body where pimples, burps, farts & funny bones are explored & explained. EXCUSE, me.

A fun game found at www.hurtwood.demon.co.uk/Fun/copter.swf tests your skills at flying a helicopter. Should have been titled "Crash & Burn."

It's polished, it's a spiffy digital clock and amazing. I understand Polish students took four years to bring us the correct time found at www.yugop.com/ver3/stuff/03/fla.html Sure beats a Mickey Mouse watch.

Attention Word users, we have a blue light special at www.word-answers.com/ where 919 articles & tips categorized across 112 topic areas should make you Doctor Word, ms. Their WordTips archives have 2500 tips.

Do you have a website that should be mentioned here? You have my e-address. Tell me about it.



Tips and Tricks

M. McEnergy/D.A. Katz

Reduce Dust On Your PDA Screen: Thanks to static electricity, your PDA screen will attract inordinate amounts of dust in a short period of time. To reduce the amount of dust on your screen, wipe it with a static-cling control sheet that you already sent through the dryer with a load of laundry.

The Best Type of Projector: Though LCD (liquid-crystal display) projectors dominate the consumer market, another type is available. LCD devices project light through a liquid-crystal screen that controls the brightness and color of each pixel. DLP (Digital Light Processing) projectors, on the other hand, use thousands of tiny mirrors, oscillating to create patterns of light and darkness through colored filters to create an on-screen image. The two technologies are comparably priced (starting at about \$1,200). DLP projectors provide a smoother image but with less brightness, so they're best if you can control room conditions. LCD projectors, however, are probably more versatile under varying conditions. The right type for you depends on the importance of image clarity vs. brightness.

Any Advantages To Using A Docking Station With A Laptop?: A notebook's size, weight, and sturdiness are its main advantages over a desktop PC. But when you finally do get back home or to your office, why not regain the advantages of a desktop? A docking station is like an exoskeleton for your notebook, permanently connected to your office printer, network, full-sized monitor, keyboard, etc. Plug your notebook into it, and all the capabilities of a desktop are instantly yours. Prices and options vary according to notebook model, so your best bet for locating a docking station suitable to your needs is by checking with your notebook's manufacturer.

How to use a Self-Extracting File: To use a self-extracting file such as a ZIP file, put the file into a temporary directory or any directory of your choice. Click the file name and the file will decompress itself. You will then have one or more files in the directory. If the file is a program, look for an EXE (executable) file among the decompressed files. Click the file to install or run the program. Self-extracting files can also contain graphics, word processing documents, or Adobe Acrobat (PDF [Portable Document File]) files. Once you have decompressed the file you can open it using the appropriate software, for example, if it is a DOC (document) file, you can open it in Microsoft Word; if it is a JPEG (Joint Photographic Experts Group) file, you can open the file in a graphics program.

What's in a Cookie: You can look at the cookies on your system. You'll probably find most of them in the Cookies

folder in your Windows directory. They are all short files with the .TXT extension, and you can open them with your favorite word processor or in Notepad or WordPad. In most cases, you'll see the name of the site that placed the cookie and one or more long strings of numbers. If there's only one string of numbers, it's a tag to identify you, or more properly, your computer. Unless you gave the Web site your name, it doesn't have the slightest idea who you are. It only knows from your cookie that you are somebody who has been on that site before. By logging your cookie number each time you request a file, the Web site can now actually track your visits, noting how often you return, which pages you visit, and what links you click. Additional strings could indicate almost anything the site wishes to record, such as the date and time you began your last visit, or your ZIP code if you've revealed that information.

Email an error message to Tech Support: Windows programs will usually display an error message whenever something has gone wrong. You can press the CTRL-C keys together and copy the error message to the clipboard. Open your email client (Outlook or Outlook Express) and create an email to the errant program's tech support, then press the CTRL-V keys together to paste the error message into the text area of the email, then send it along to tech support for resolution.

LCACE Announcement

Lake County Area Computer Enthusiasts will host a program on "How To Battle the Dark Side of the Net and Win - Foiling Spam, Spy ware, Trojan Horses, Viruses and Hackers" at the Grayslake Area Public Library, 100 Library Lane, Grayslake, Saturday, March 19th, 2005, 12:30-3 p.m. Zack Gilbertsen will demonstrate how to "beat the bad guys" trying to infect our computers. After a brief business meeting, nominations will be taken for the April election of officers. A computer will be set up for hands-on tutorials.

For more information about these and future LCACE programs, visit www.lcace.org.

A nonprofit educational organization founded in 1983, Lake County Area Computer Enthusiasts (LCACE) promotes computer literacy among users of all computers. The group provides an opportunity to mingle with computer

(Continued on page 6)

Agency collects record amount of e-waste

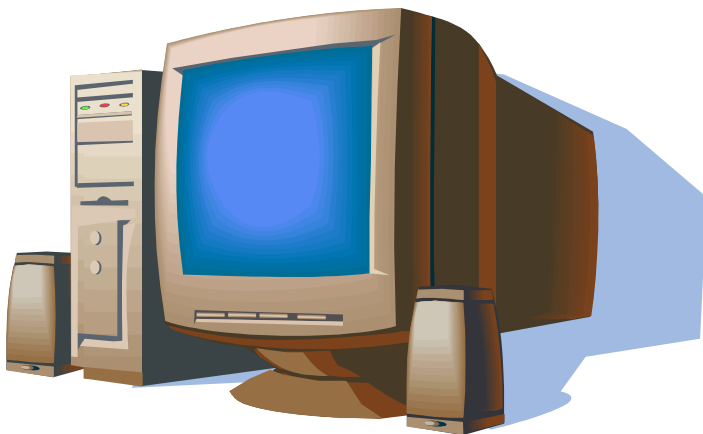
Submitted by Winnie Frost/appeared in the "Daily Herald"

The Solid Waste Agency of Lake County collected a record amount of e-waste at a post-holiday collection on Jan 29, 2005, at the Lake County Public Works Department.

More than 1,000 residents dropped off more than 50 tons of computers, monitors, televisions and other electronic gadgets. The purpose of the collection program was to recycle electronic products, ensure hazardous materials are safely disposed of, and save landfill space.

SWALCO plans to hold two more collection programs this year.

Residents who missed the January 29 collections can sign up for the agency's new e-mail list service at www.swalco.org. Future collections, including those for household chemical wastes, will be announced via the e-mail list.



FlipAlbum Suite 5

~~\$59.95~~ suggested retail price
\$49.95* for ff(p;-)

* Special Discounted Price only available through the Friends of FlipAlbum Program. ff(p;-) Visit www.flipfriends.com now to purchase!

ISREPJOHNSON

Use this Discount Code
...also with our toll-free order line at 1-888-231-5575

Create and Distribute 3D Page-Flipping Digital Albums on CDs

- Full page layout with multiple photos, text, audio and multimedia
- Share your photo albums on CDs and on the Internet
- Supports multiple photo albums per CD
- MP3 background music and playlist
- DVD Playback of your photo albums on TV*

More than 1 Million FlipAlbums sold

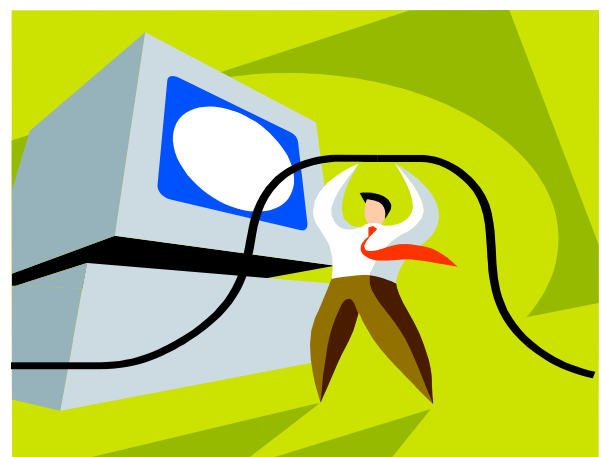
DIGITAL Flip

Promo Materials ver. 1.1 dated 04 April 2003
NB: All prices are correct at time of publication

(Continued from page 5)

users of all levels-novice, hobbyist, and professional.

Come to the meeting. You're guaranteed to learn something, and you can become part of this "Members Helping Members" group. Membership in LCACE is open to anyone with an interest in computing, from novice to expert. There are neither age limitations nor geographic restrictions for membership. The only requirement is a genuine interest in computers. For more information, phone Dwight (J.J.) Johnson, (847) 623-3815.



Famous Quotes

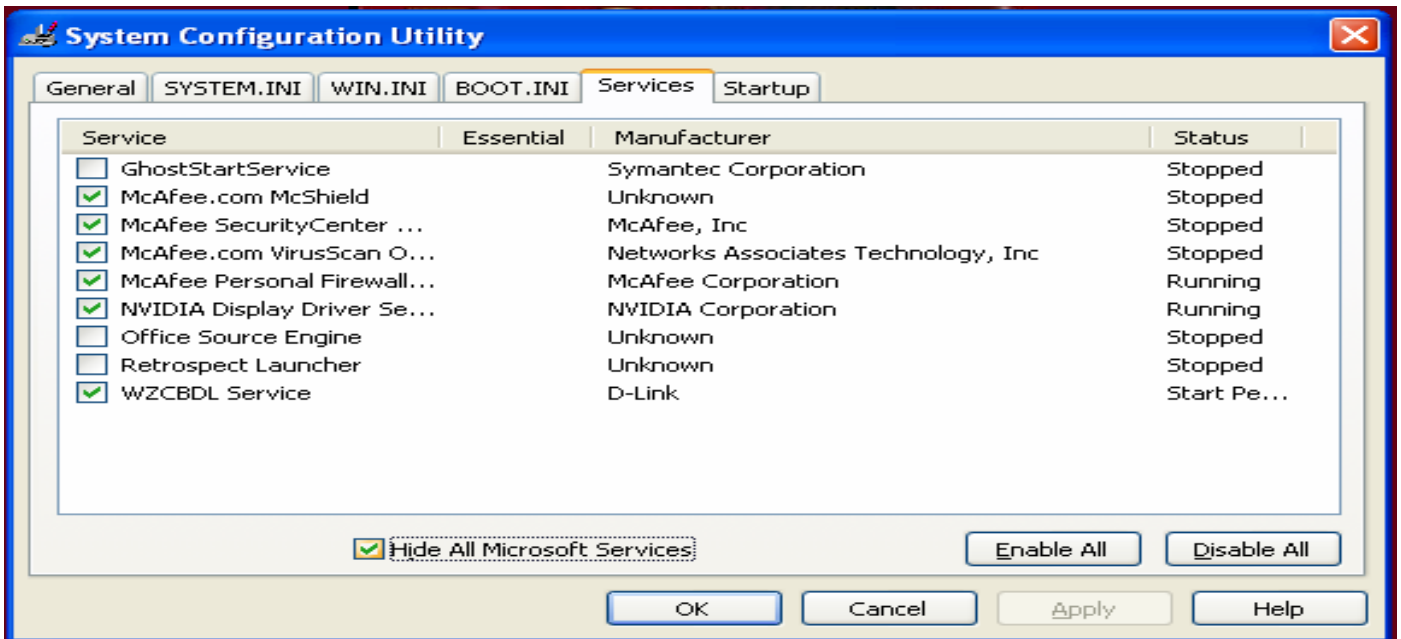
Everything is funny as long as it is happening to somebody else.

-Will Rogers

Lack of will power has caused more failure than lack of intelligence or ability.

-Flower A. Newhouse

Track Down Non-operating System Services



When you're troubleshooting a problem in Windows XP, it can be useful to know which services are running. While most of the services running on a Windows XP system relate to the operating system, this is not the case for all of them. You can use the Services tool, which you can launch via Control Panel's Administrative Tools, to view the running services. But if you use this tool, you must be able to recognize which services relate to the operating system and which do not. However, there's a little-known feature in the System Configuration Utility that can quickly identify non-

operating system services for you. Follow these steps:

1. Press [Windows]R to open the Run dialog box.
 2. In the Open text box, type msconfig, and click OK.
 3. When the System Configuration Utility launches, select the Services tab.
 4. At the bottom of the Services tab, select the Hide All Microsoft Services check box.
- The System Configuration Utility will then display only non-Microsoft services that are running. Deselect the check box to return to the full list.

Smart Computing & CPU
USER GROUP PROGRAM

1 Year\$29 2 Years\$48 3 Years\$64

Name _____
 Company _____
 Address _____
 City _____ St _____ Zip _____
 Phone (____) _____
 E-mail _____

Payment Options (Check One)
 Visa Mastercard Payment Enclosed
 Discover American Express Bill Me

Account Number _____ Expiration _____
 Signature _____

Smart Computing.com/groups

Lake County Area Computer Enthusiasts
 Be Sure to use the LCACE Numbers:
 SC: 12010
 CPU: 588

Mail to:
 Smart Computing, PO Box 85380
 Lincoln, NE 68501-9807
 Fax: 402-479-2193
 Call to Order: 800-733-3809 • 402-479-2135

Scientists Make Phone That Turns Into a Sunflower

Mon., Dec 6, 12:27 PM ET

AMSTERDAM (Reuters) - Scientists said on Monday they have come up with a cell phone cover that will grow into a sunflower when thrown away.

Materials company Pvaax Research & Development, at the request of U.S.-based mobile phone maker Motorola (NYSE:[MOT](#) - [news](#)), has come up with a polymer that looks like any other plastic, but which degrades into soil when discarded.

Researchers at the University of Warwick in Britain then helped to develop a phone cover that contains a sunflower seed, which will feed on the nitrates that are formed when the polyvinyl alcohol polymer cover turns to waste.



"It's a totally biodegradable and non-toxic plastic," said Pvaax spokesman Peter Morris.

"This is the first product that we've made public. We're working with blue chip companies and will introduce several products next year," he said, adding it would be used in electronics, horticulture, ammunition and household cleaning.

The company's new plastic, which was created over the past five years but was in development for longer, can be rigid or flexible in shape.

Some 650 million mobile phones will be sold this year, and most of them will be thrown away within two years, burdening the environment with plastics, heavy metals and

Membership UPDATE

April

Renewals

Keith Korell

Donald Martin

Tyler Schneiderman

Gavin Williams

chemicals. A biodegradable cover can offer some relief for nature, Warwick University said.

Motorola said it had not yet decided if it would introduce a model built with the new plastic, and that it would take until at least the second quarter of 2005 to get a commercial product.

"(To improve) the quality (of the plastic) is something we're working on," said Motorola project manager Peter Shead, adding the new plastic may be used in snap-on covers first.

Many young consumers buy cheap and interchangeable plastic covers to personalize their standard phone.

All rights reserved. Users may download and print extracts of content from this website for their own personal and non-commercial use only. Republication or redistribution of Reuters content, including by framing or similar means, is expressly prohibited without the prior written consent of Reuters. Reuters and the Reuters sphere logo are registered trademarks or trademarks of the Reuters group of companies around the world.

© Reuters 2004

e-mail



members

Barnet, FredBNSCom.aol.com
 Busch, Linda.....lindashrub@juno.com
 Bermah, Janet.....jgiftofgrace@yahoo.com
 Ehlert, Rodger D.....rehlert2@sbcglobal.net
 Frost, Jack.....Jfrost@megsinet.net
 Frost, Winnie.....jfrost@megsinet.net
 Galla, Sue Ann.....villesuzie@warpmnet.net
 Grauzas, LaweranceMrG2156@aol.com
 Grimm, Phil.....pgrimm4@comcast.net
 Halley, Jack.....jack96@aol.com
 Hanlon, Terri.....terhanlon@comcast.net
 Horvath, M.S.....Horvath2@msn.com
 Johnson, J.J.....jj1450xl@megsinet.net
 Kalinoski, Donna L.....donnaaleek@juno.com
 Korell, Keith K.....kkorell@aol.com
 Mitchell, Earl G.....egm1705@juno.com
 McDonald, Mark J.....markym36@aol.com
 McEnery, Mike.....mmcenery@sbcglobal.net
 Nabors, John.....Jog@nomad.net
 Nordstrom, Lee & Mary.....LeeNord@earthlink.net
 Prange, Terry.....tprange@juno.com
 Rivera, Julio & Lourdes.....jlrevera@db3mail.com
 Rutledge, James W.....jrutnet1@comcast.net
 Schintgen, Paul.....patys@theramp.net
 Seidenberg, Lewdrlew1@aol.com
 Seidenberg, Robinanguslechat@aol.com
 Shaughnessy, Howard & Dianeolisha1@aol.com
 Straw, Gerald.....gkstraw@comcast.net
 Sutherland, Dorothy.....dorothy4263@sbcglobal.net
 Swiezer, Edward.....ednjen11@juno.com
 Tuttle, Bob.....btuttle12@comcast.net
 Vogt, Grace.....g.vogt@sbcglobal.net
 Wilson, Dennisdcwilson@exexp.com

**If you have a
 Web Site
 and would like to
 advertise it here,
 E-mail me at
 editor@lcace.org**

LCACE

**Video / CD
 Library**

**Learning Illustrator
 Power Point XP
 Digital Photography - The Easy Way**



Take a
 good look,
 you just
 might see

LCACE CLUB PICTURES at:
<http://lcace.org/PhotoAlbums.htm>

As much as we try, we do make errors. Please advise us if there is a mistake in your E-Mail address or if it is not included in this listing. Send E-Mail to Ms. Dorothy Sutherland at membership@lcace.org with the additions and/or corrections. Thank you. This listing last updated February 28, 2005

L.C.A.C.E. HOTLINE

Call: 847.623.3815

Web Site: <http://www.lcace.org>

TIME TO RENEW

If it is time for you to renew your membership, please fill out a new Application and a Member's Profile Sheet. These forms can be obtained at the meetings or downloaded from our WEB site.

LCACE Online

View our Site
<http://www.lcace.org>

E-Mail Us At:

webmaster@lcace.org

Sign the Guest Book and tell us what you think

- ◆ LCACE E-mail addresses
- ◆ LCACE information
- ◆ LCACE history and pictures
- ◆ LCACE meeting, location, and map
- ◆ LCACE member's e-mail addresses

NEXT MEETING

March 19, 2005

Grayslake Public Library

12:30pm—3:00pm

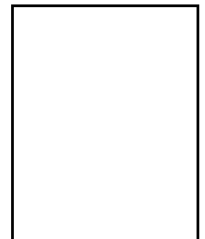
Meeting Room Opens at Noon

This month:

"How To Battle the Dark Side of the Net and Win"

LCACE

Lake County Area Computer Enthusiasts
409 S. Elmwood Ave.
Waukegan, IL 60085-5219



ADDRESS CORRECTION REQUESTED